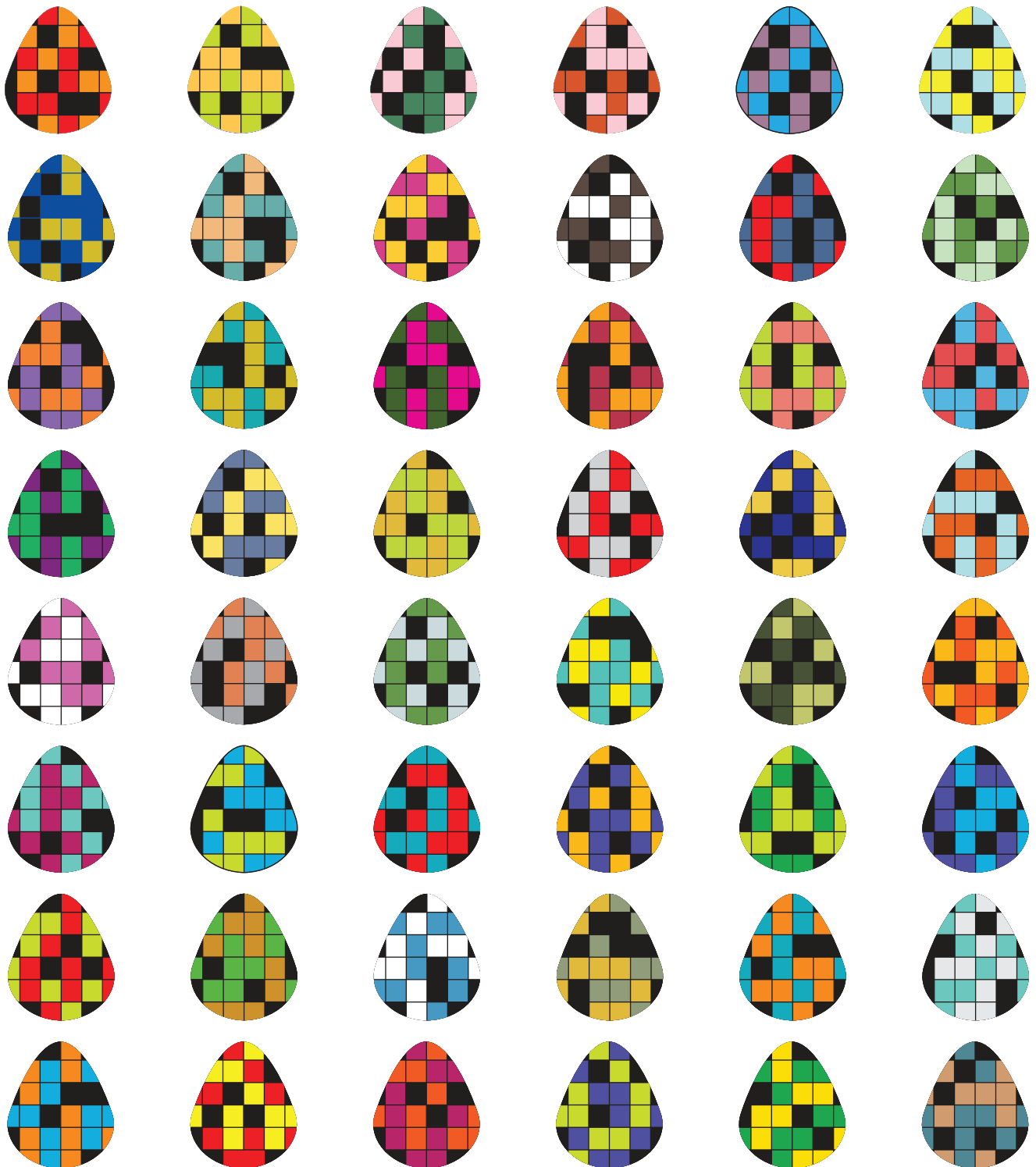


### #3—JACK'S 1st VERY TRICKY EGG PUZZLE

Here are four dozen eggs with a sort of crossword puzzle pattern on them. Only two of the patterns are identical. The colors are different, but the patterns are the same. Can you identify the identical eggs. Pat yourself on the back if you can, because this is a very hard puzzle.



The eggs in row 2, column 6 and row 8, column 3 are identical.